

Building Great Places

Development Update - Infrastructure, amenities and facilities at Lewin Park

We take pride in what we do and work hard to deliver developments our customers will enjoy living in.

As well as building high quality homes, our developments are designed to include the necessary infrastructure, useful amenities, leisure facilities and green open spaces.

The table below gives details of the works which are in progress and are planned to be delivered at Lewin Park. The works are also shown on the plan below.

The timescales provided for completion of works are indicative and may be subject to change based on external market factors.

For information on progress of these works please check the Development website accessed via www.crestnicholson.com

Schedule of Remaining Works to Parcel

Plan Ref	Description	Remaining Works	Is a Third Party Responsible for Completing?	Forecast Date for Works Completion
1	Equipped Play Area	<ul style="list-style-type: none">Complete footpath surfacing	No	Q1 2025
2	Adoptable Road	<ul style="list-style-type: none">Tarmac surface course to footwaysTarmac surface course to carriagewayCompletion of remaining highway landscaping	No	Q3 2025

Notes:

- The estate management company will also be responsible for maintaining small areas of incidental landscaping and shared drive accesses for a small number of properties. These items are not included on the above schedule due to their more limited nature and use, however they will be completed alongside the adjacent homes.

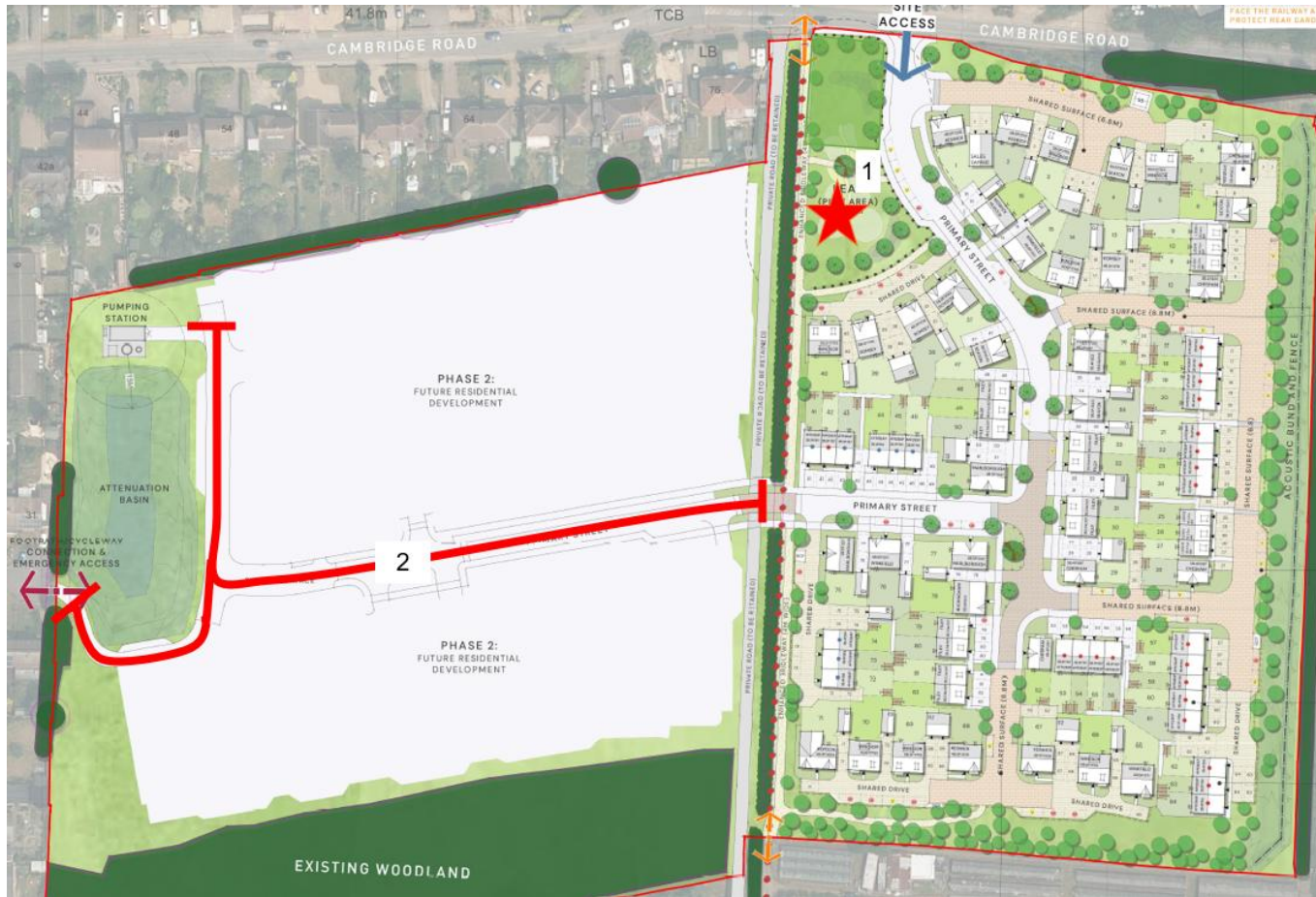
December 2024 – Updated Quarterly



Building Great Places

Development Update - Infrastructure, amenities and facilities at Lewin Park

Parcel Remaining Works Plan



December 2024 – Updated Quarterly



Building Great Places

Development Update - Infrastructure, amenities and facilities at Lewin Park

Managing Agents Contact Details

Crest Nicholson has appointed Broadoak to undertake the estate management for the development. Should you wish to discuss any estate management matters please contact the following:

Email: query@broadoakmanagement.co.uk

Telephone: 01525 211548

Fax: 01525 211235