



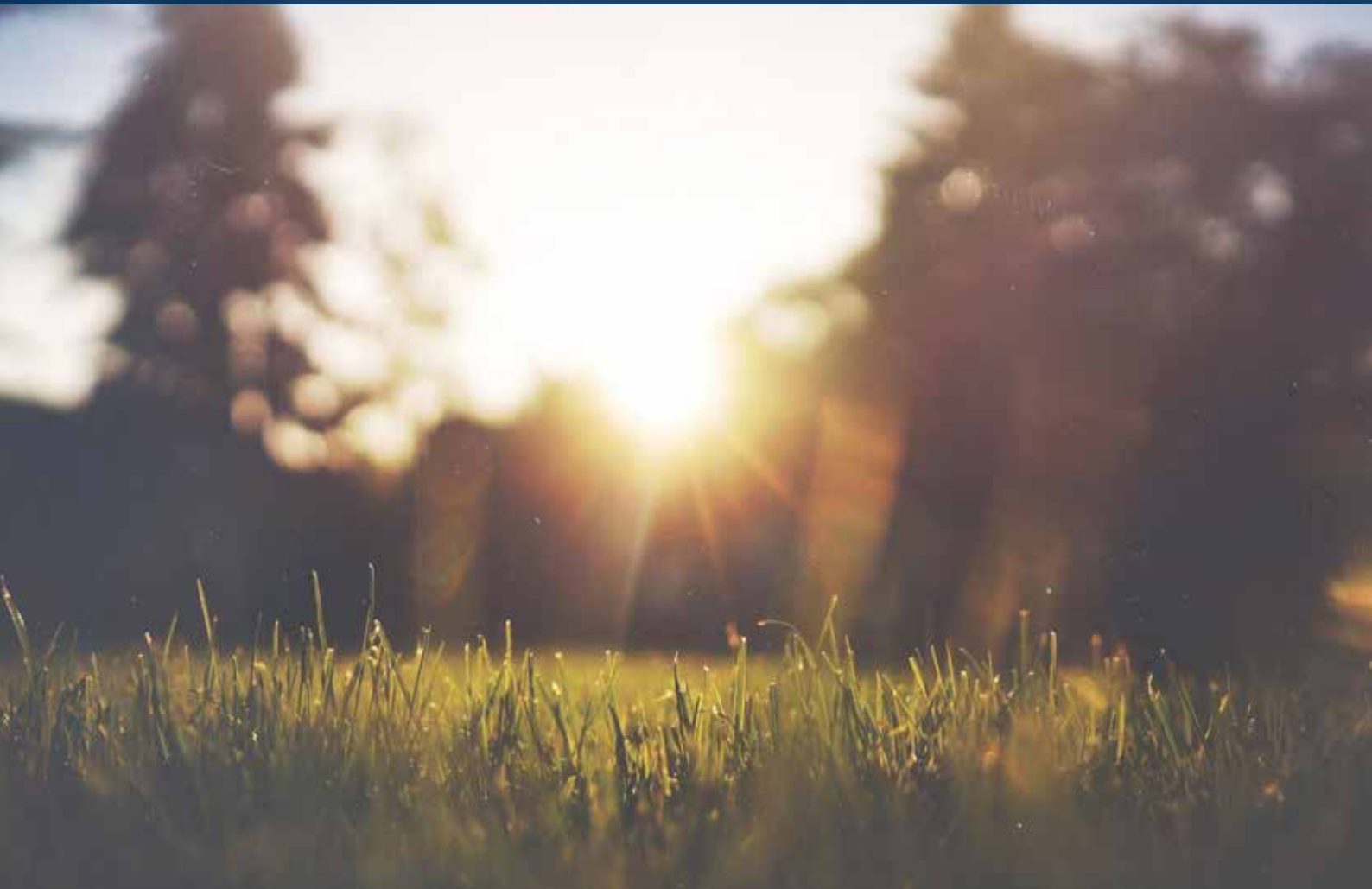
**CREST
NICHOLSON**

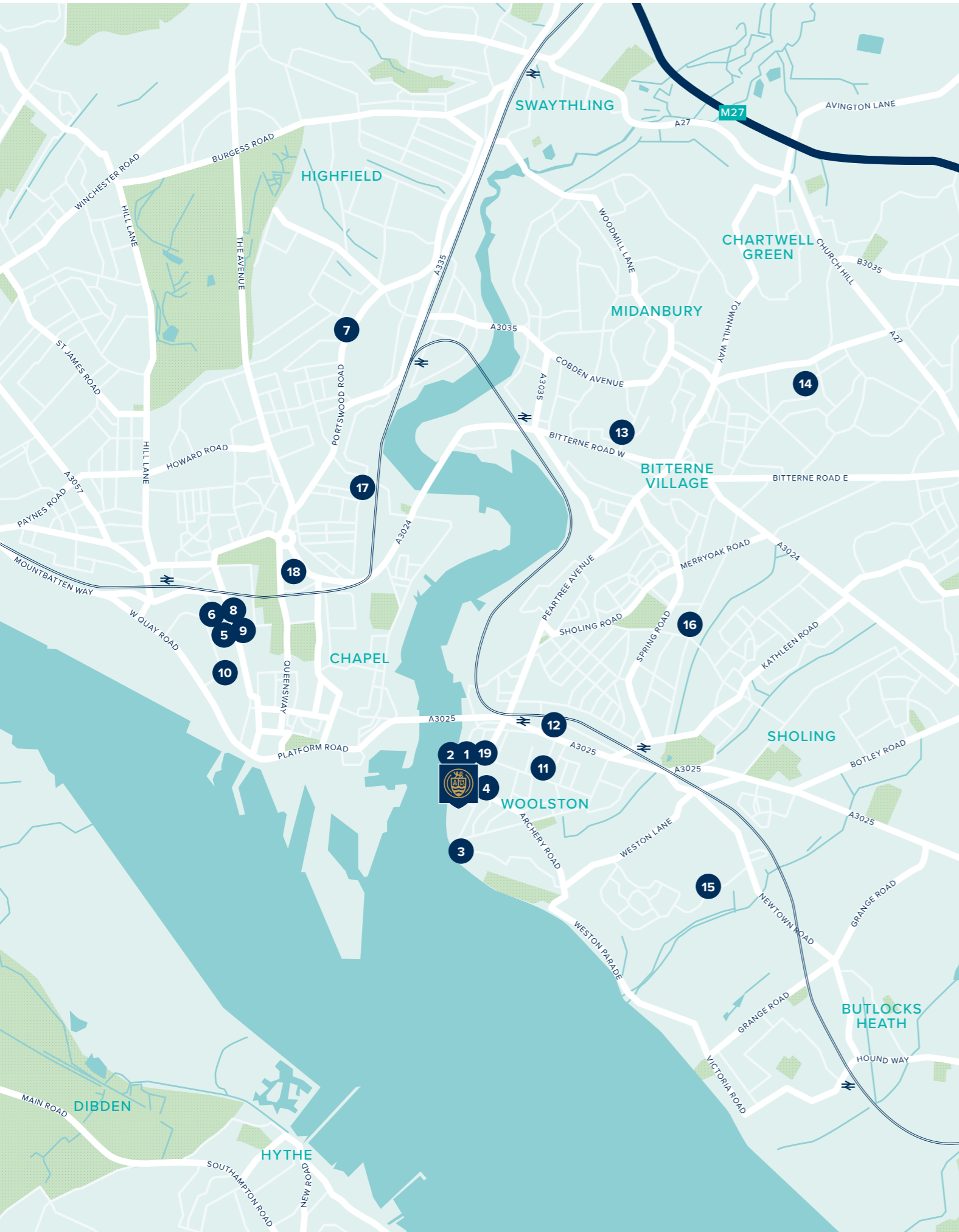
CENTENARY QUAY

SOUTHAMPTON

A vibrant new community boasting a selection of new homes for everyone. There is so much to do on your doorstep at Centenary Quay making it ideal for first time buyers, second steppers, young professionals and investors alike.

1 & 2 BEDROOM APARTMENTS





WELCOME TO CENTENARY QUAY

Life at Centenary Quay offers so many possibilities. It's a place where you can experience the very best of waterside city living.

On your doorstep

Whether it's grabbing a coffee on your way to work or catching up with friends over Sunday lunch, you'll never have to travel far because there are a number of amenities on your doorstep.

- 1 Metricks Woolston Waterside (Café)
- 2 Quayside (Bar)
- 3 Southampton Sailing Club
- 4 Premier – The Star Off License
- 5 Marks and Spencer
- 6 John Lewis
- 7 Waitrose
- 8 Zara
- 9 Next
- 10 Cinema de Lux

Education

Centenary Quay is located near to an array of well-established schools that have all been rated as 'Good' or 'Outstanding' by Ofsted.

- 11 Woolston Infant School
- 12 St Patricks Catholic Primary School
- 13 Beechwood Junior School
- 14 Harefield Primary School
- 15 Weston Secondary School
- 16 Oasis Academy Sholing
- 17 Maytree Nursery and Infants' School
- 18 Southampton Solent University
- 19 YMCA Nursery Woolston

Travel

Centenary Quay has excellent travel connections, making it the ideal destination for work, rest or play. For those commuting, Southampton Central train station is nearby (just a 15-minute journey from Woolston station) and offers regular connections to London, with a journey time of approximately 1hr 15mins to London Waterloo.



Winchester – 26 minutes

Portsmouth Gunwharf Quays – 34 minutes

Bournemouth – 47 minutes

Salisbury – 44 minutes



London Waterloo from Southampton Central Train Station – 79 minutes

Bristol Temple Meads from Southampton Central Train Station – 98 minutes

Portsmouth Harbour from Southampton Central Train Station – 50 minutes





CENTENARY QUAY SALES SUITE

John Thornycroft Road,
Southampton, Hampshire, SO19 9XF

For all enquiries please call

02382 553 680

crestnicholson.com/centenaryquay

THE PERFECT MIX OF WATERSIDE CITY LIVING

Centenary Quay is an exciting collection of 1 & 2 bedroom apartments, set within a fantastic waterside location.

Choose your home at Centenary Quay and you will experience an exciting new world of modern, waterside living. This is an amazing location where you can enjoy stunning views of the river and the city of Southampton beyond. The aim of the designers was to build a new vibrant community, one based around the love of nature and with the objective of being as self-sufficient as possible. That's why you will see pretty courtyards, trees and gardens dotted about, while some rooftops feature plants and wildlife nesting boxes. Imagine strolling out of your front door and being at the water's edge within a few minutes. Perhaps you will see a stunning cruise ship full of excited passengers off on a Caribbean

adventure. Maybe then you will choose to have a coffee at one of the cafés and bars on the waterfront.

For when you fancy a faster pace of life, a short trip across the river takes you into the buzzing city of Southampton. As one of the south's largest cities there is lots to see and do here. Serious shoppers will love West Quay with its major high-street stores and well-known cafés, pubs and restaurants. For history lovers there are some great museums including the SeaCity Museum with its interactive model of the Titanic, and the Solent Sky museum which has vintage aircraft on display like the famous Spitfire.

When you feel like getting out for the day there are some fantastic places to visit. One of the highlights close by is the stunning New Forest National Park with its beautiful scenery, paths and cycling trails. There is also Bournemouth with its lovely sandy beaches, and the historic town of Winchester is less than 20 miles away.

Centenary Quay is an amazing place to live and call home. With its idyllic waterside living, combined with excellent transport links, you really can enjoy the best of everything this fantastic location has to offer.





**CREST
NICHOLSON**

CENTENARY QUAY

DEVELOPMENT PLAN

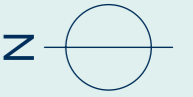
A beautiful collection of 1 & 2 bedroom apartments.

1 & 2 BEDROOM APARTMENTS



1 & 2 BEDROOM APARTMENTS

- Pembroke Apartments
- Hamwick Apartments
- * Mix of 1 & 2 Bed Affordable Rent
- SS Substation





**CREST
NICHOLSON**

CENTENARY QUAY PHASE 6

HAMWICK HOUSE

Those who just love to entertain will feel right at home in the Hamwick apartments. Your guests can relax with a drink in the open-plan kitchen/living/dining areas while you put the finishing touches to dinner, with the ground floor terraces and upper floor balconies just waiting for those sun-kissed al fresco lunches. Overnight guests can also take advantage of the en suite in the 2 bedroom apartments, while all of the main bedrooms - and the majority of the second bedrooms - are also spacious enough to accommodate double beds.

1 & 2 BEDROOM APARTMENTS





PLOT 92

KITCHEN / LIVING AREA	
7.15m x 3.78m	23'5" x 12'5"
BEDROOM 1	
5.06m x 2.76m	16'7" x 9'0"
BEDROOM 2	
3.91m x 2.79m	12'10" x 9'2"

PLOT 94

KITCHEN / LIVING AREA	
7.15m x 3.42m	23'5" x 11'2"
BEDROOM 1	
3.91m x 3.00m	12'9" x 9'10"

PLOT 96

KITCHEN / LIVING AREA	
7.15m x 2.42m	23'5" x 7'11"
BEDROOM 1	
5.56m x 2.76m	18'2" x 9'0"
BEDROOM 2	
3.91m x 2.79m	12'10" x 9'1"

PLOT 98

KITCHEN / LIVING AREA	
7.15m x 3.78m	23'5" x 12'5"
BEDROOM 1	
5.06m x 2.76m	16'7" x 9'0"
BEDROOM 2	
3.91m x 2.79m	12'10" x 9'1"

PLOT 93

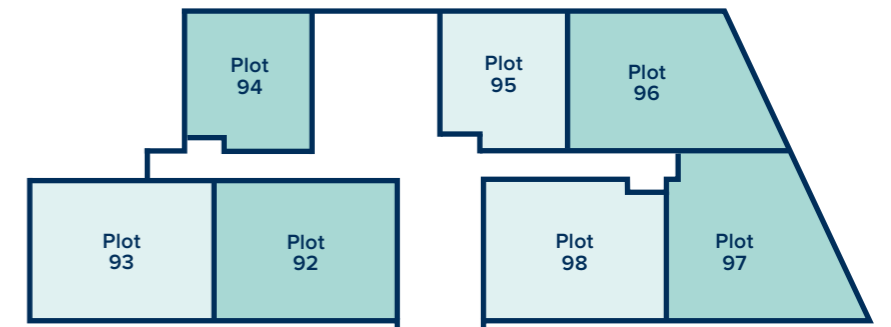
KITCHEN / LIVING AREA	
7.16m x 3.77m	23'5" x 12'4"
BEDROOM 1	
5.56m x 2.76m	18'2" x 9'0"
BEDROOM 2	
3.87m x 2.79m	12'8" x 9'1"

PLOT 95

KITCHEN / LIVING AREA	
6.23m x 3.66m	20'4" x 12'0"
BEDROOM 1	
5.06m x 2.76m	16'7" x 9'0"

PLOT 97

KITCHEN / LIVING AREA	
6.85m x 4.99m	22'5" x 16'4"
BEDROOM 1	
3.50m x 3.46m	11'4" x 11'3"
BEDROOM 2	
4.76m x 3.60m	15'7" x 11'9"





PLOT 99

KITCHEN / LIVING AREA	
7.15m x 3.78m	23'5" x 12'5"
BEDROOM 1	
5.06m x 2.76m	16'7" x 9'0"
BEDROOM 2	
3.91m x 2.79m	12'10" x 9'1"

PLOT 101

KITCHEN / LIVING AREA	
5.12m x 4.56m	16'9" x 14'11"
BEDROOM 1	
4.06m x 3.02m	13'3" x 9'11"
BEDROOM 2	
4.96m x 2.66m	16'3" x 8'8"

PLOT 104

KITCHEN / LIVING AREA	
7.15m x 5.51m	23'7" x 18'0"
BEDROOM 1	
3.91m x 3.00m	12'9" x 9'10"

PLOT 106

KITCHEN / LIVING AREA	
6.85m x 4.99m	22'5" x 16'4"
BEDROOM 1	
3.50m x 3.46m	11'4" x 11'3"
BEDROOM 2	
4.76m x 3.60m	15'7" x 11'9"

PLOT 100

KITCHEN / LIVING AREA	
7.16m x 3.77m	23'5" x 12'4"
BEDROOM 1	
5.56m x 2.76m	18'2" x 9'0"
BEDROOM 2	
3.87m x 2.79m	12'8" x 9'1"

PLOT 102, 103

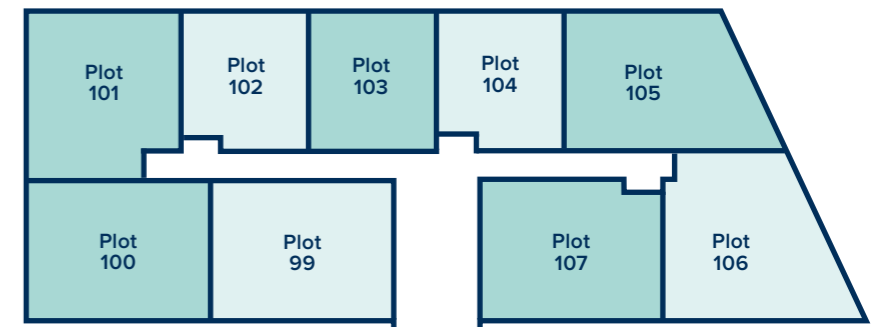
KITCHEN / LIVING AREA	
6.88m x 5.65m	22'7" x 18'6"
BEDROOM	
5.06m x 2.76m	16'7" x 9'0"

PLOT 105

KITCHEN / LIVING AREA	
7.15m x 2.42m	23'5" x 7'11"
BEDROOM 1	
5.56m x 2.76m	18'2" x 9'0"
BEDROOM 2	
3.91m x 2.79m	12'10" x 9'1"

PLOT 107

KITCHEN / LIVING AREA	
6.42m x 3.78m	21'1" x 12'5"
BEDROOM 1	
5.53m x 2.79m	18'1" x 9'1"
BEDROOM 2	
3.88m x 2.75m	12'8" x 9'0"





PLOT 108

KITCHEN / LIVING AREA	
7.15m x 3.78m	23'5" x 12'5"
BEDROOM 1	
5.06m x 2.76m	16'7" x 9'0"
BEDROOM 2	
3.91m x 2.79m	12'10" x 9'1"

PLOT 110

KITCHEN / LIVING AREA	
5.12m x 4.56m	16'9" x 14'11"
BEDROOM 1	
4.06m x 3.02m	13'3" x 9'11"
BEDROOM 2	
4.96m x 2.66m	16'3" x 8'8"

PLOT 112, 113

KITCHEN / LIVING AREA	
7.15m x 5.65m	23'5" x 18'6"
BEDROOM	
5.06m x 2.76m	16'7" x 9'0"

PLOT 115

KITCHEN / LIVING AREA	
6.85m x 4.99m	22'5" x 16'4"
BEDROOM 1	
3.50m x 3.46m	11'4" x 11'3"
BEDROOM 2	
4.76m x 3.60m	15'7" x 11'9"

PLOT 109

KITCHEN / LIVING AREA	
7.16m x 3.77m	23'5" x 12'4"
BEDROOM 1	
5.56m x 2.76m	18'2" x 9'0"
BEDROOM 2	
3.87m x 2.79m	12'8" x 9'1"

PLOT 111

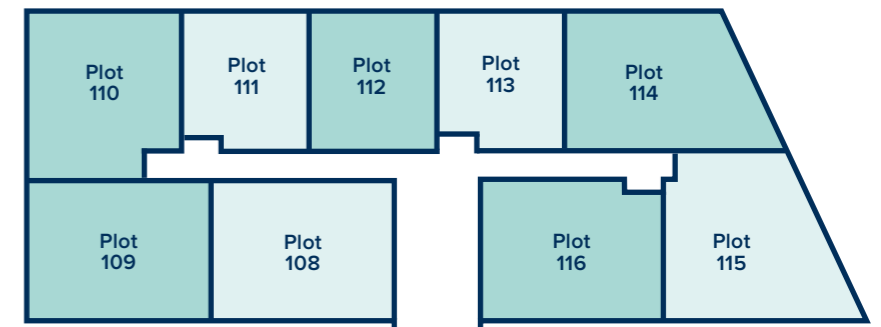
KITCHEN / LIVING AREA	
7.15m x 5.51m	23'5" x 18'0"
BEDROOM	
3.91m x 3.00m	12'9" x 9'10"

PLOT 114

KITCHEN / LIVING AREA	
7.15m x 2.42m	23'5" x 7'11"
BEDROOM 1	
5.56m x 2.76m	18'2" x 9'0"
BEDROOM 2	
3.91m x 2.79m	12'10" x 9'1"

PLOT 116

KITCHEN / LIVING AREA	
7.14m x 3.78m	23'5" x 12'5"
BEDROOM 1	
5.06m x 2.76m	16'7" x 9'0"
BEDROOM 2	
3.91m x 2.78m	12'10" x 9'1"





PLOT 117

KITCHEN / LIVING AREA	
7.15m x 3.78m	23'5" x 12'5"
BEDROOM 1	
5.06m x 2.76m	16'7" x 9'0"
BEDROOM 2	
3.91m x 2.79m	12'10" x 9'1"

PLOT 119

KITCHEN / LIVING AREA	
5.12m x 4.56m	16'9" x 14'11"
BEDROOM 1	
4.06m x 3.02m	13'3" x 9'11"
BEDROOM 2	
4.96m x 2.66m	16'3" x 8'8"

PLOT 122

KITCHEN / LIVING AREA	
7.15m x 5.07m	23'5" x 16'7"
BEDROOM	
3.91m x 3.00m	12'9" x 9'10"

PLOT 124

KITCHEN / LIVING AREA	
6.85m x 4.99m	22'5" x 16'4"
BEDROOM 1	
3.50m x 3.46m	11'4" x 11'3"
BEDROOM 2	
4.76m x 3.60m	15'7" x 11'9"

PLOT 118

KITCHEN / LIVING AREA	
7.16m x 3.77m	23'5" x 12'4"
BEDROOM 1	
5.56m x 2.76m	18'2" x 9'0"
BEDROOM 2	
3.87m x 2.79m	12'8" x 9'1"

PLOT 120, 121

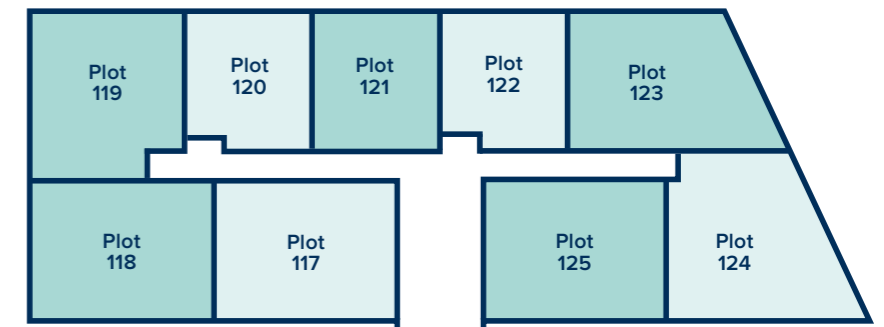
KITCHEN / LIVING AREA	
6.88m x 5.65m	22'7" x 18'6"
BEDROOM	
5.06m x 2.76m	16'7" x 9'0"

PLOT 123

KITCHEN / LIVING AREA	
7.15m x 2.42m	23'5" x 7'11"
BEDROOM 1	
5.56m x 2.76m	18'2" x 9'0"
BEDROOM 2	
3.91m x 2.79m	12'10" x 9'1"

PLOT 125

KITCHEN / LIVING AREA	
6.42m x 3.78m	21'1" x 12'5"
BEDROOM 1	
5.53m x 2.79m	18'1" x 9'1"
BEDROOM 2	
3.88m x 2.75m	12'8" x 9'0"





**CREST
NICHOLSON**

CENTENARY QUAY PHASE 6

PEMBROOK HOUSE

Space and flexibility are both in great supply at the Pembrook apartments. Looking to entertain family and friends? It's easy with open-plan kitchen/living/dining areas designed for those who want to be the host with the most. And if you like al fresco dining, you'll have a terrace to enjoy on the ground floor, and balconies on the other floors; that sun-drenched morning coffee never tasted so good. Plus, all the main bedrooms and most of the second bedrooms are large enough for double beds, with the luxury of an en suite in the 2 bedroom apartments.

1 & 2 BEDROOM APARTMENTS

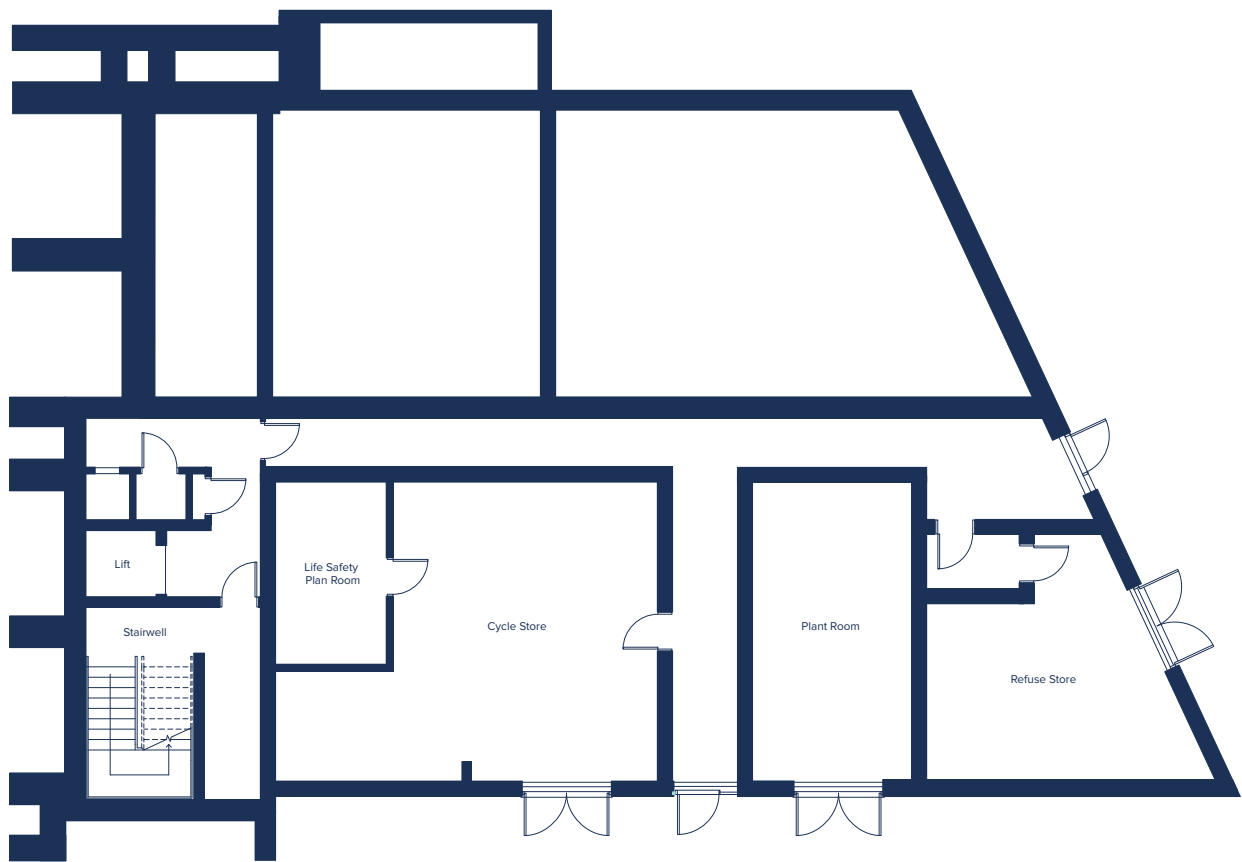




**CREST
NICHOLSON**

PEMBROOK HOUSE
1 & 2 BEDROOM APARTMENTS

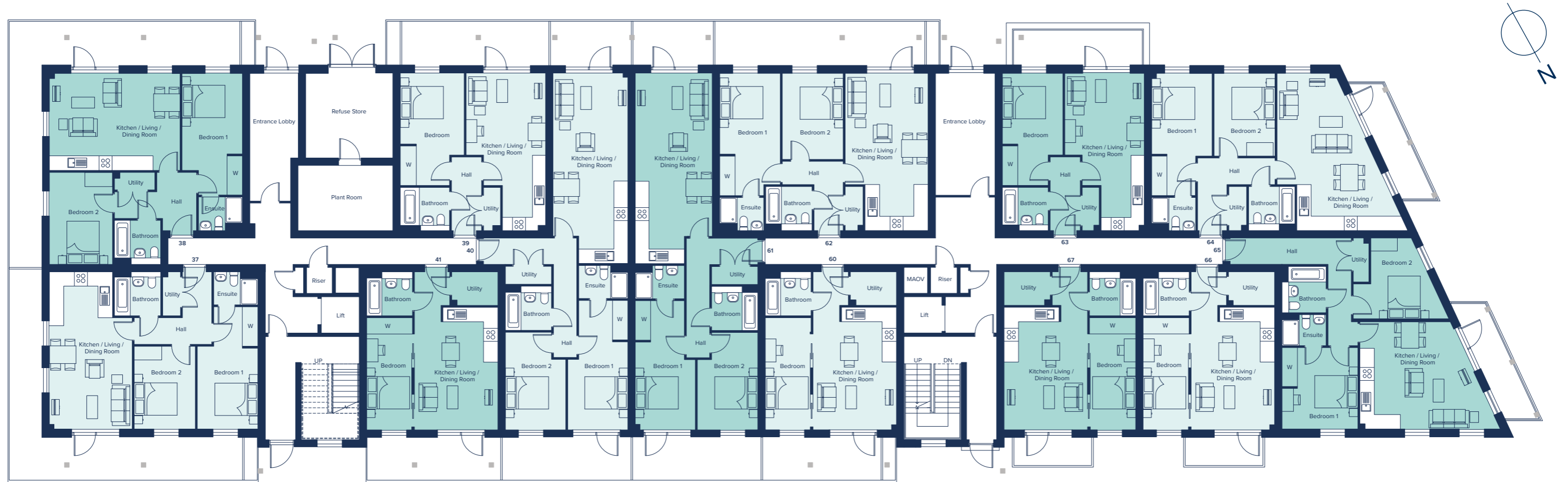
crestnicholson.com



LOWER GROUND FLOOR

Please note, the digital illustrations are for illustration purposes only and any may not accurately depict elevation materials, gradients, landscaping or street furniture and may be subject to change. Whilst every effort has been made to ensure that the measurements and dimensions referred to in this brochure are an accurate reflection of the dimensions and measurements of the plots when built, the dimensions may vary from the measurements shown in the brochure save that any such variation shall be no greater than +/- 50mm of the measurements referred to in the brochure. You are strongly advised, therefore, not to order any carpets, appliances or any other goods which depend on precise dimensions before carrying out an actual measurement within your reserved plot. Whilst every reasonable effort has been made to ensure that the information contained in this brochure is correct, it is designed specifically as a guide only and does not constitute or form any part of a contract of sale transfer or lease unless any point that you specifically want to rely on is confirmed in writing by Crest Nicholson and is referred to in the contract. Please ask a sales executive for further details. Crest Nicholson is a registered developer with the New Homes Quality Code. Please speak to a sales executive if you need further help with any marketing material including provision in another format. 1012300/January 2025.





PLOT 37

KITCHEN / LIVING AREA	
7.15m x 3.79m	23'5" x 12'5"
BEDROOM 1	
5.56m x 2.76m	18'2" x 9'0"
BEDROOM 2	
3.77m x 2.79m	12'4" x 9'1"

PLOT 39

KITCHEN / LIVING AREA	
7.15m x 3.62m	23'4" x 11'10"
BEDROOM	
5.08m x 2.8m	16'8" x 9'0"

PLOT 62

KITCHEN / LIVING AREA	
7.15m x 3.80m	23'5" x 12'5"
BEDROOM 1	
5.56m x 2.76m	18'2" x 9'0"
BEDROOM 2	
3.91m x 2.78m	12'0" x 9'1"

PLOT 63

KITCHEN / LIVING AREA	
7.15m x 3.62m	23'4" x 11'10"
BEDROOM 1	
5.08m x 2.76m	16'X8" x 9'0"

PLOT 64

KITCHEN / LIVING AREA	
7.15m x 5.06m	23'5" x 16'7"
BEDROOM 1	
3.76m x 2.76m	12'4" x 9'0"
BEDROOM 2	
3.76m x 2.78m	12'4" x 9'1"

PLOT 65

KITCHEN / LIVING AREA	
6.40m x 4.88m	21'0" x 16'0"
BEDROOM 1	
3.71m x 3.46m	12'2" x 11'4"
BEDROOM 2	
4.41m x 3.68m	14'5" x 12'1"

PLOT 38

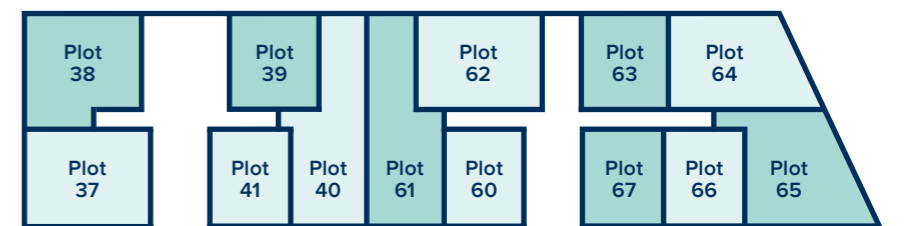
KITCHEN / LIVING AREA	
5.96m x 4.42m	19'6" x 14'6"
BEDROOM 1	
5.54m x 2.76m	18'2" x 9'0"
BEDROOM 2	
4.19m x 2.88m	13'9" x 9'5"

PLOT 40, 61

KITCHEN / LIVING AREA	
8.66m x 3.51m	28'5" x 11'6"
BEDROOM 1	
5.86m x 2.74m	19'2" x 9'0"
BEDROOM 2	
4.41m x 2.74m	14'5" x 9'0"

PLOT 41, 60, 66, 67

KITCHEN / LIVING AREA	
5.53m x 3.81m	18'1" x 12'6"
BEDROOM 1	
5.13m x 2.07m	16'8" x 6'8"





PLOT 42

KITCHEN / LIVING AREA	7.15m x 3.79m	23'5" x 12'5"
BEDROOM 1	5.56m x 2.76m	18'2" x 9'0"
BEDROOM 2	3.77m x 2.79m	12'4" x 9'1"

PLOT 44, 45

KITCHEN / LIVING AREA	7.15m x 3.62m	23'4" x 11'10"
BEDROOM	5.08m x 2.8m	16'8" x 9'0"

PLOT 47, 68, 74, 75

KITCHEN / LIVING AREA	5.53m x 3.81m	18'1" x 12'6"
BEDROOM	5.13m x 2.07m	16'8" x 6'8"

PLOT 72

KITCHEN / LIVING AREA	7.15m x 5.06m	23'5" x 16'7"
BEDROOM 1	3.76m x 2.76m	12'4" x 9'0"
BEDROOM 2	3.76m x 2.78m	12'4" x 9'1"

PLOT 73

KITCHEN / LIVING AREA	6.40m x 4.88m	21'0" x 16'0"
BEDROOM 1	3.71m x 3.46m	12'2" x 11'4"
BEDROOM 2	4.41m x 3.68m	14'5" x 12'1"

PLOT 43

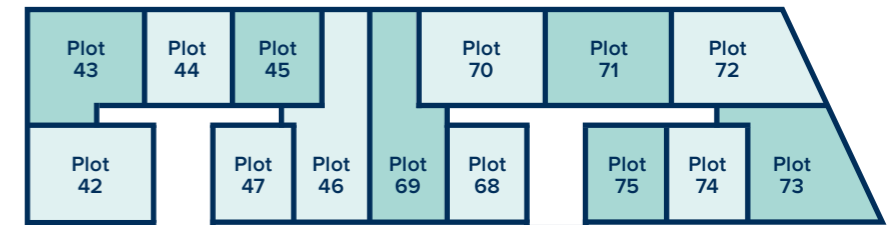
KITCHEN / LIVING AREA	5.96m x 4.42m	19'6" x 14'6"
BEDROOM 1	5.54m x 2.76m	18'2" x 9'0"
BEDROOM 2	4.19m x 2.88m	13'9" x 9'5"

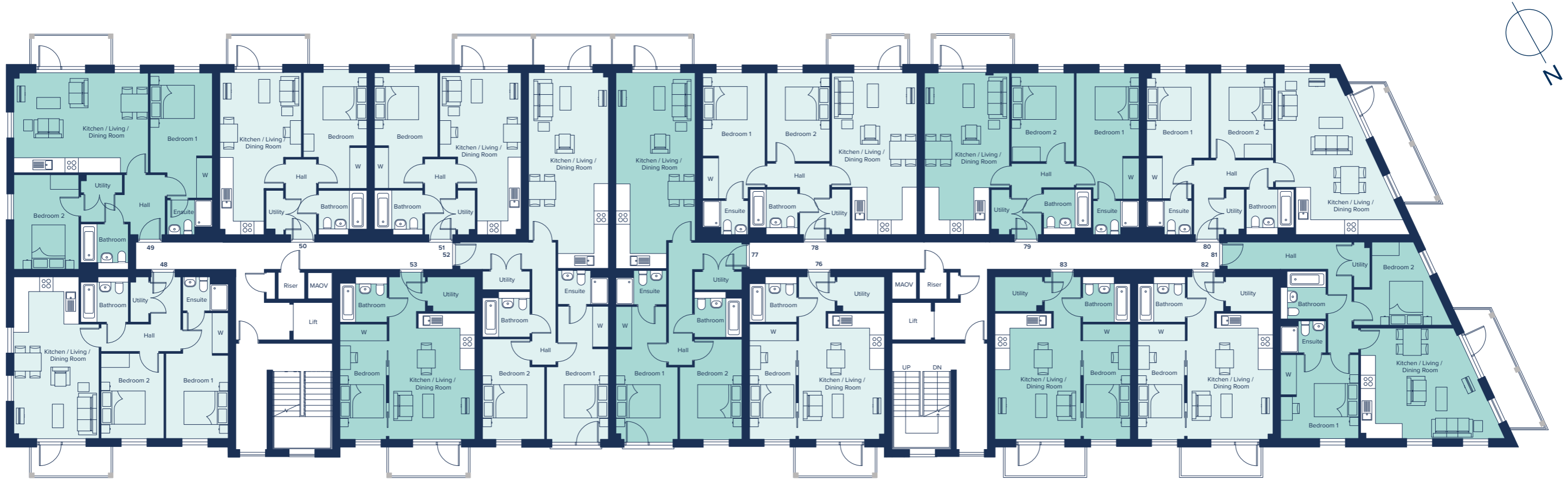
PLOT 46, 69

KITCHEN / LIVING AREA	8.66m x 3.51m	28'5" x 11'6"
BEDROOM 1	5.86m x 2.74m	19'2" x 9'0"
BEDROOM 2	4.41m x 2.74m	14'5" x 9'0"

PLOT 70, 71

KITCHEN / LIVING AREA	7.15m x 3.78m	23'5" x 12'5"
BEDROOM 1	5.56m x 2.74m	18'2" x 9'0"
BEDROOM 2	3.91m x 2.78m	12'10" x 9'1"





PLOT 48

KITCHEN / LIVING AREA	7.15m x 3.79m	23'5" x 12'5"
BEDROOM 1	5.56m x 2.76m	18'2" x 9'0"
BEDROOM 2	3.77m x 2.79m	12'4" x 9'1"

PLOT 50, 51

KITCHEN / LIVING AREA	7.15m x 3.62m	23'4" x 11'10"
BEDROOM	5.08m x 2.8m	16'8" x 9'0"

PLOT 53, 76, 82, 83

KITCHEN / LIVING AREA	5.53m x 3.81m	18'1" x 12'6"
BEDROOM	5.13m x 2.07m	16'8" x 6'8"

PLOT 80

KITCHEN / LIVING AREA	7.15m x 5.06m	23'5" x 16'7"
BEDROOM 1	3.76m x 2.76m	12'4" x 9'0"
BEDROOM 2	3.76m x 2.78m	12'4" x 9'1"

PLOT 81

KITCHEN / LIVING AREA	6.40m x 4.88m	21'0" x 16'0"
BEDROOM 1	3.71m x 3.46m	12'2" x 11'4"
BEDROOM 2	4.41m x 3.68m	14'5" x 12'1"

PLOT 49

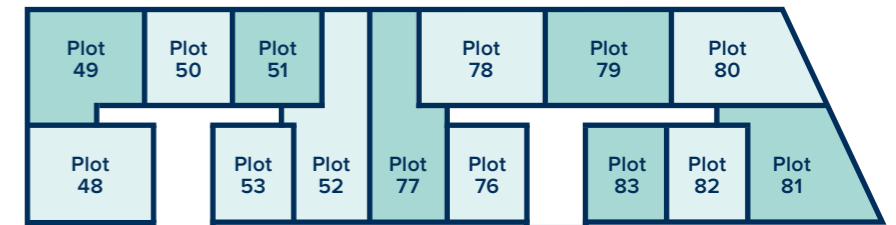
KITCHEN / LIVING AREA	5.96m x 4.42m	19'6" x 14'6"
BEDROOM 1	5.54m x 2.76m	18'2" x 9'0"
BEDROOM 2	4.19m x 2.88m	13'9" x 9'5"

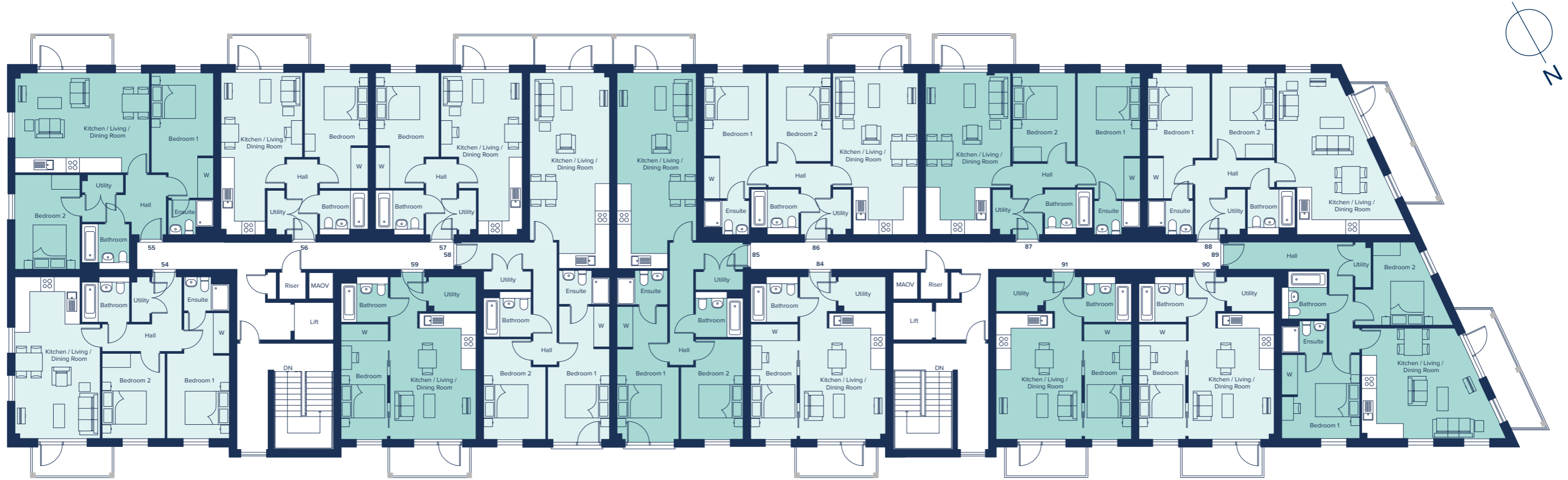
PLOT 52, 77

KITCHEN / LIVING AREA	8.66m x 3.51m	28'5" x 11'6"
BEDROOM 1	5.86m x 2.74m	19'2" x 9'0"
BEDROOM 2	4.41m x 2.74m	14'5" x 9'0"

PLOT 78, 79

KITCHEN / LIVING AREA	7.15m x 3.78m	23'5" x 12'5"
BEDROOM 1	5.56m x 2.74m	18'2" x 9'0"
BEDROOM 2	3.91m x 2.78m	12'10" x 9'1"





PLOT 54

KITCHEN / LIVING AREA	7.15m x 3.79m	23'5" x 12'5"
BEDROOM 1	5.56m x 2.76m	18'2" x 9'0"
BEDROOM 2	3.77m x 2.79m	12'4" x 9'1"

PLOT 56, 57

KITCHEN / LIVING AREA	7.15m x 3.62m	23'4" x 11'10"
BEDROOM	5.08m x 2.8m	16'8" x 9'0"

PLOT 59, 84, 90, 91

KITCHEN / LIVING AREA	5.53m x 3.81m	18'1" x 12'6"
BEDROOM	5.13m x 2.07m	16'8" x 6'8"

PLOT 88

KITCHEN / LIVING AREA	7.15m x 5.06m	23'5" x 16'7"
BEDROOM 1	3.76m x 2.76m	12'4" x 9'0"
BEDROOM 2	3.76m x 2.78m	12'4" x 9'1"

PLOT 89

KITCHEN / LIVING AREA	6.40m x 4.88m	21'0" x 16'0"
BEDROOM 1	3.71m x 3.46m	12'2" x 11'4"
BEDROOM 2	4.41m x 3.68m	14'5" x 12'1"

PLOT 55

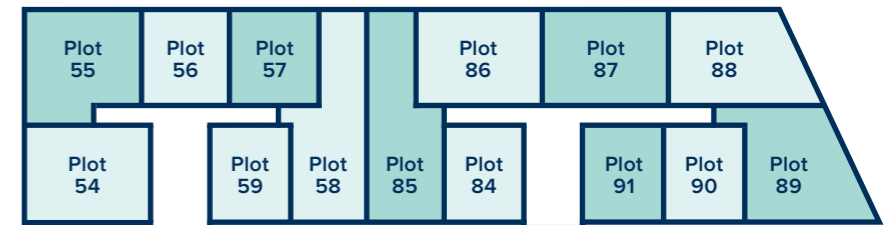
KITCHEN / LIVING AREA	5.96m x 4.42m	19'6" x 14'6"
BEDROOM 1	5.54m x 2.76m	18'2" x 9'0"
BEDROOM 2	4.19m x 2.88m	13'9" x 9'5"

PLOT 58, 85

KITCHEN / LIVING AREA	8.66m x 3.51m	28'5" x 11'6"
BEDROOM 1	5.86m x 2.74m	19'2" x 9'0"
BEDROOM 2	4.41m x 2.74m	14'5" x 9'0"

PLOT 86, 87

KITCHEN / LIVING AREA	7.15m x 3.78m	23'5" x 12'5"
BEDROOM 1	5.56m x 2.74m	18'2" x 9'0"
BEDROOM 2	3.91m x 2.78m	12'10" x 9'1"





SPECIFICATION

Your brand new Crest Nicholson home benefits from attractive styling and modern integrated appliances.

	1 Bedroom Home	2 Bedroom Home
KITCHEN		
Choice of soft close fitted kitchen complete with laminate worksurface and upstand (subject to stage of construction)	•	•
Electric single built-in oven in stainless steel	•	•
Electric built-under 1 ½ oven in stainless steel		
Electric built-in double oven in stainless steel		
4 ring gas hob in stainless steel	•	•
5 ring gas hob in stainless steel		
Stainless steel splashback behind hob	•	•
Stainless steel chimney extractor hood	•	•
Energy efficient integrated fridge/freezer	•	•
Energy efficient integrated dishwasher		
Energy efficient integrated washing machine	•	•
Single bowl sink and drainer in stainless steel	•	•
1.5 bowl sink and drainer in stainless steel		
Single lever chrome mixer tap	•	•
BATHROOM, EN SUITE AND CLOAKROOM		
Contemporary white sanitaryware	•	•
Chrome mixer taps and shower fittings	•	•
Soft close toilet seats	•	•
Full height tiling around bath with shower and folding bath screen where there is no separate shower facility in the home	•	•
Half height tiling around bath where a separate shower facility is provided in the home	•	•
Full height tiling to enclosed shower area where applicable	•	•
Half height tiling to walls where other sanitaryware is fitted in bathroom and en suite	•	•
Heated white towel rail to bathrooms and en suites	•	•
Tiled splashback to basin in cloakroom	•	•
Energy efficient downlights in cloakroom	•	•

*Integrated dishwasher included if there is a utility room **Integrated washing machine included if there is no utility room.



	1 Bedroom Home	2 Bedroom Home
UTILITY ROOM		
Sink to utility rooms ***	•	•
External door to utility rooms ****	•	•
ELECTRICAL		
Low energy LED downlighters in white to kitchen	•	•
Low energy LED downlighters in white to bathroom, cloakroom and en suite	•	•
Low energy lighting in all other areas	•	•
TV and data point to living room & TV point to main bedroom	•	•
Telecommunications to the home including fibre for broadband capabilities	•	•
DECORATION		
White emulsion to all rooms and ceilings	•	•
White gloss to window boards, internal doors, skirting and architraves	•	•
JOINERY AND DOORS		
Front door with multipoint locking system and chrome ironmongery	•	•
White PVCu windows and patio doors with white ironmongery	•	•
White internal doors with chrome ironmongery	•	•
Fitted wardrobes to main bedroom with soft close sliding mirror fronted doors	•	•
HEATING		
Gas-fired boiler with wet radiator heating system and domestic hot water provided at mains pressure	•	•
EXTERNAL FINISHES		
Front gardens to be landscaped	•	•
Rear gardens topsoiled and rotovated	•	•
External low energy security light fitted by front door	•	•
External tap	•	•
SECURITY AND PEACE OF MIND		
Smoke, heat and carbon monoxide detectors	•	•
Two years warranty and aftercare	•	•
Complete NHBC ten year warranty	•	•

Where a utility room is fitted *Where a sink is shown on the floor plans

Crest Nicholson follows NHBC guidelines on number of plug sockets to install in homes, which require a minimum of: eight sockets in any kitchen (including appliances spurs); four double sockets in any living room; three double sockets in any study, two double sockets in any dining room, one double socket in any hallway and one double socket on any landing; three double sockets in any double bedroom; two double sockets in any single bedroom; one double socket in any dressing room and two double sockets in any other rooms.

Whilst every effort has been made to ensure that the contents and specification in this brochure is correct and accurate at the time of creation, it may be subject to change and Crest Nicholson reserves the right to amend the contents and specification at any time prior to completion. This contents and specification does not in any way constitute or form any part of a contract of sale transfer or lease. Please ask a sales executive for further details. Crest Nicholson is a registered developer with the New Homes Quality Code. Please speak to a sales executive if you need further help with any marketing material including provision in another format. 1012304/January 2025





**CREST
NICHOLSON**

CENTENARY QUAY SALES SUITE

John Thornycroft Road,
Southampton, Hampshire, SO19 9XF

For all enquiries please call

02382 553 680

crestnicholson.com/centenaryquay



House Type Illustration

Please note, the digital illustrations are for illustration purposes only and any may not accurately depict elevation materials, gradients, landscaping or street furniture and may be subject to change. Whilst every effort has been made to ensure that the measurements and dimensions referred to in this brochure are an accurate reflection of the dimensions and measurements of the plots when built, the dimensions may vary from the measurements shown in the brochure save that any such variation shall be no greater than +/- 50mm of the measurements referred to in the brochure. You are strongly advised, therefore, not to order any carpets, appliances or any other goods which depend on precise dimensions before carrying out an actual measurement within your reserved plot. Whilst every reasonable effort has been made to ensure that the information contained in this brochure is correct, it is designed specifically as a guide only and does not constitute or form any part of a contract of sale transfer or lease unless any point that you specifically want to rely on is confirmed in writing by Crest Nicholson and is referred to in the contract. Please ask a sales executive for further details. Crest Nicholson is a registered developer with the New Homes Quality Code. Please speak to a sales executive if you need further help with any marketing material including provision in another format.

Development Map/Site Plan

Please note, the digital illustrations are for illustration purposes only and any may not accurately depict elevation materials, gradients, landscaping or street furniture. Whilst every effort has been made to ensure that the information in this site map is correct and accurate at the time of creation, it may be subject to change and Crest Nicholson reserves the right to amend the layout of the development. The location of affordable homes is indicative only. The remaining homes on the development are available for open market sale (including multi-unit sales) to purchasers, who could be private individuals or another type of purchaser (for example local authorities, housing associations or other commercial landlords), and, therefore, the mix of tenures on a development may change. This site map does not in any way constitute or form any part of a contract of sale transfer or lease. Please ask a sales executive for further details. 1012304/January 2025.

