



**CREST
NICHOLSON**

THE HATFIELD

The Hatfield is an attractive two-storey home perfect for family life, including an open-plan kitchen-dining area ideal for entertaining, in addition to a separate living room with French doors providing ample natural light and views over the private garden. Upstairs, the main bedroom has the benefit of an en suite bathroom and two further bedrooms share a family bathroom.

3 BEDROOM HOME



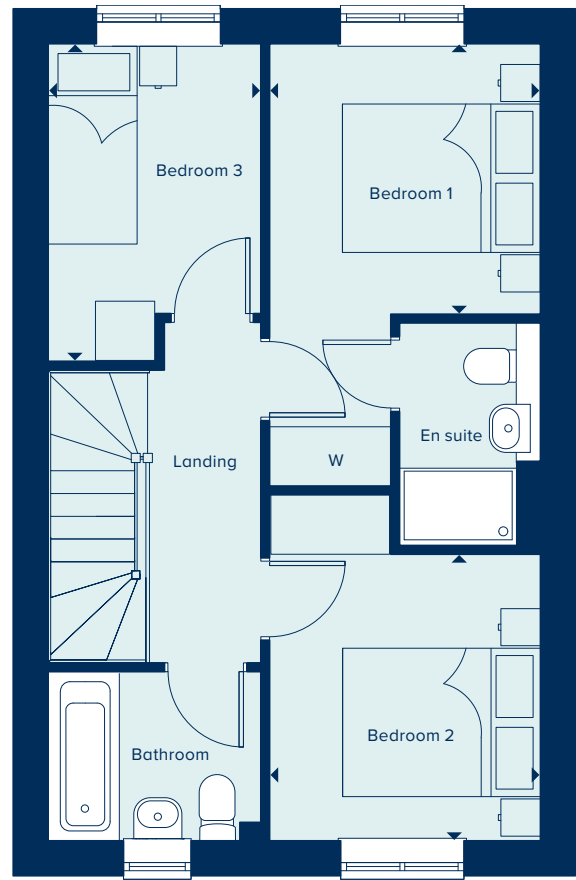
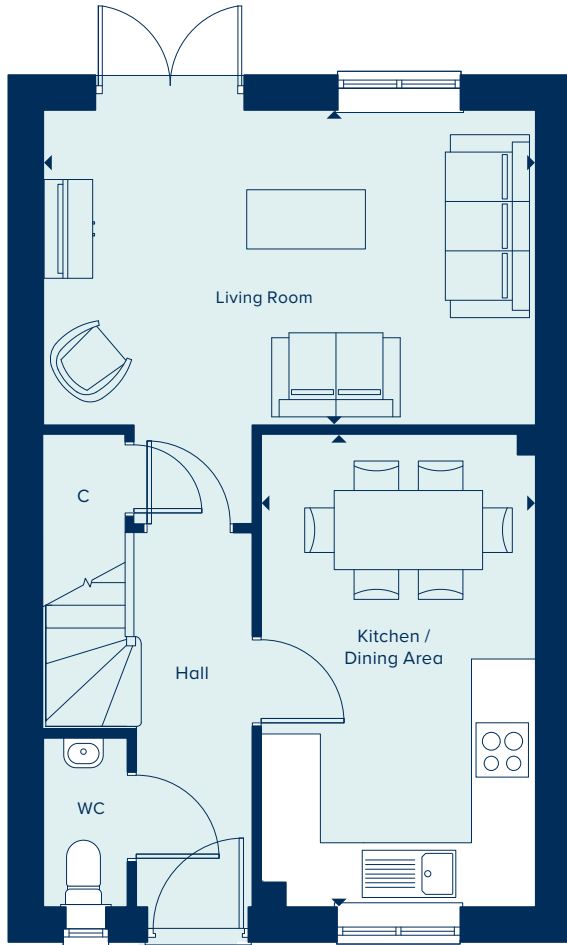


**CREST
NICHOLSON**

THE HATFIELD

3 Bedroom Home

crestnicholson.com



GROUND FLOOR

KITCHEN / DINING AREA

4.78m x 2.78m 15'8" x 9'1"

LIVING ROOM

4.98m x 3.18m 16'4" x 10'5"

FIRST FLOOR

BEDROOM 1

2.74m x 2.73m 9'0" x 8'11"

BEDROOM 2

2.89m x 2.74m 9'6" x 9'0"

BEDROOM 3

3.21m x 2.15m 10'6" x 7'0"

C Cupboard W Wardrobe

Please note, the digital illustrations are for illustration purposes only and any may not accurately depict elevation materials, gradients, landscaping or street furniture and may be subject to change. Whilst every effort has been made to ensure that the measurements and dimensions referred to in this brochure are an accurate reflection of the dimensions and measurements of the plots when built, the dimensions may vary from the measurements shown in the brochure save that any such variation shall be no greater than +/- 50mm of the measurements referred to in the brochure. You are strongly advised, therefore, not to order any carpets, appliances or any other goods which depend on precise dimensions before carrying out an actual measurement within your reserved plot. Whilst every reasonable effort has been made to ensure that the information contained in this brochure is correct, it is designed specifically as a guide only and does not constitute or form any part of a contract of sale transfer or lease unless any point that you specifically want to rely on is confirmed in writing by Crest Nicholson and is referred to in the contract. Please ask a sales executive for further details. Crest Nicholson is a registered developer with the New Homes Quality Code. Please speak to a sales executive if you need further help with any marketing material including provision in another format. 1010553/March 2023.





**CREST
NICHOLSON**

THE CHESHAM

The Chesham is a generously sized three-bedroom property. It has a double-fronted layout and features an attractive bay window which, together with French doors, make this a beautifully bright property. A welcoming hallway leads to two spacious reception rooms: a kitchen-dining area and living room. The three bedrooms include a large main bedroom with an en suite bathroom.

3 BEDROOM HOME





**CREST
NICHOLSON**

THE CHESHAM

3 Bedroom Home

crestnicholson.com

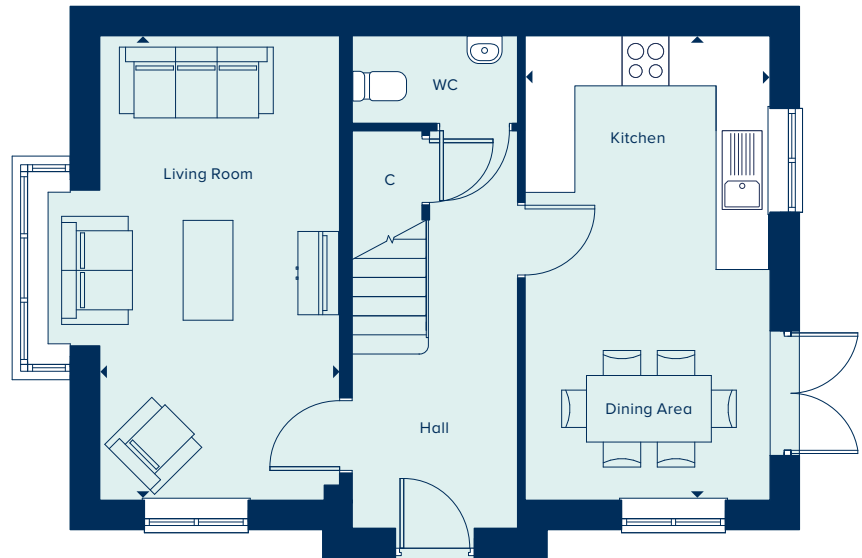
GROUND FLOOR

KITCHEN / DINING AREA

5.58m x 2.95m 18'4" x 9'8"

LIVING ROOM

5.58m x 2.89m 18'4" x 9'5"



FIRST FLOOR

BEDROOM 1

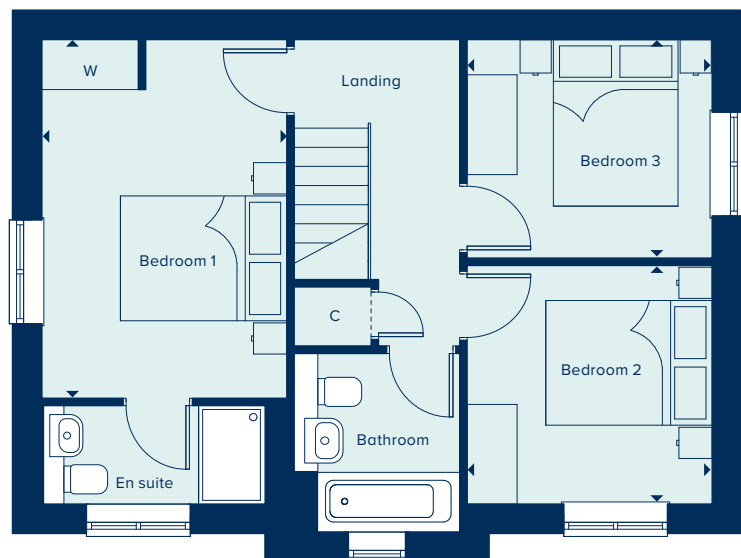
4.31m x 2.95m 14'1" x 9'8"

BEDROOM 2

2.95m x 2.87m 9'8" x 9'5"

BEDROOM 3

2.95m x 2.63m 9'8" x 8'7"



C Cupboard W Wardrobe --- Bulkhead

Please note, the digital illustrations are for illustration purposes only and any may not accurately depict elevation materials, gradients, landscaping or street furniture and may be subject to change. Whilst every effort has been made to ensure that the measurements and dimensions referred to in this brochure are an accurate reflection of the dimensions and measurements of the plots when built, the dimensions may vary from the measurements shown in the brochure save that any such variation shall be no greater than +/- 50mm of the measurements referred to in the brochure. You are strongly advised, therefore, not to order any carpets, appliances or any other goods which depend on precise dimensions before carrying out an actual measurement within your reserved plot. Whilst every reasonable effort has been made to ensure that the information contained in this brochure is correct, it is designed specifically as a guide only and does not constitute or form any part of a contract of sale transfer or lease unless any point that you specifically want to rely on is confirmed in writing by Crest Nicholson and is referred to in the contract. Please ask a sales executive for further details. Crest Nicholson is a registered developer with the New Homes Quality Code. Please speak to a sales executive if you need further help with any marketing material including provision in another format. 1010553/March 2023.





CREST
NICHOLSON

THE FILEY

A four bedroom family home spread over three storeys, The Filey provides flexibility and space in which to entertain. The first floor features two double bedrooms plus a single bedroom and a family bathroom. Bedroom one takes up the entire second floor and benefits from an en suite and built-in wardrobe. The ground floor comprises of an open plan kitchen and dining area plus a separate living room with French doors to the rear garden.

4 BEDROOM HOME



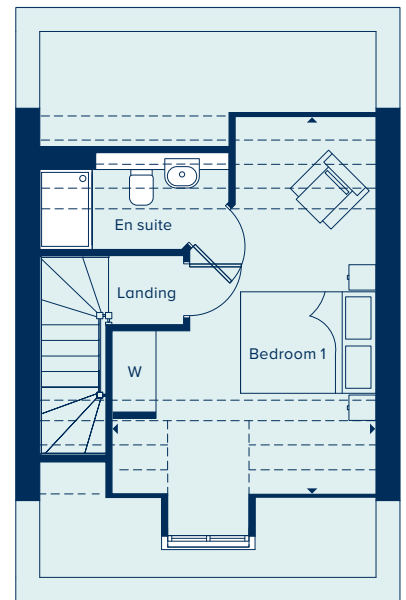
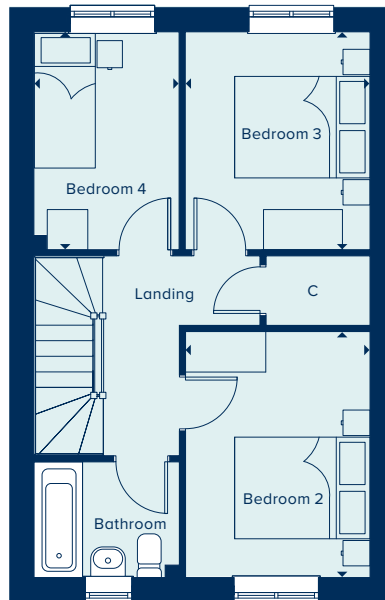
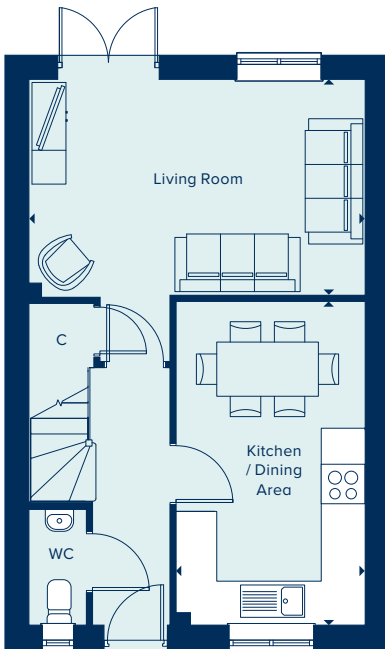


**CREST
NICHOLSON**

THE FILEY

4 Bedroom Home

crestnicholson.com



GROUND FLOOR

LIVING ROOM

4.97m x 3.19m 16'3" x 10'5"

KITCHEN / DINING AREA

4.78m x 2.79m 15'8" x 9'2"

FIRST FLOOR

BEDROOM 2

3.64m x 2.73m 11'11" x 8'11"

BEDROOM 3

3.22m x 2.73m 10'6" x 8'11"

BEDROOM 4

3.22m x 2.15m 10'6" x 7'0"

SECOND FLOOR

BEDROOM 1

5.58m x 3.85m 18'4" x 12'7"

C Cupboard W Wardrobe ● Specification

Please note, the digital illustrations are for illustration purposes only and any may not accurately depict elevation materials, gradients, landscaping or street furniture and may be subject to change. Whilst every effort has been made to ensure that the measurements and dimensions referred to in this brochure are an accurate reflection of the dimensions and measurements of the plots when built, the dimensions may vary from the measurements shown in the brochure save that any such variation shall be no greater than +/- 50mm of the measurements referred to in the brochure. You are strongly advised, therefore, not to order any carpets, appliances or any other goods which depend on precise dimensions before carrying out an actual measurement within your reserved plot. Whilst every reasonable effort has been made to ensure that the information contained in this brochure is correct, it is designed specifically as a guide only and does not constitute or form any part of a contract of sale transfer or lease unless any point that you specifically want to rely on is confirmed in writing by Crest Nicholson and is referred to in the contract. Please ask a sales executive for further details. Crest Nicholson is a registered developer with the New Homes Quality Code. Please speak to a sales executive if you need further help with any marketing material including provision in another format. 1010553/March 2023.





**CREST
NICHOLSON**

THE ROMSEY

With flexible open-plan living space and generously sized bedrooms, the Romsey is an attractive family home. The downstairs benefits from a substantial, bright and airy living room. A versatile kitchen-dining area with ample space for relaxation or play is ideally suited to family life. Upstairs are four bedrooms and two bathrooms (one en suite).

4 BEDROOM HOME



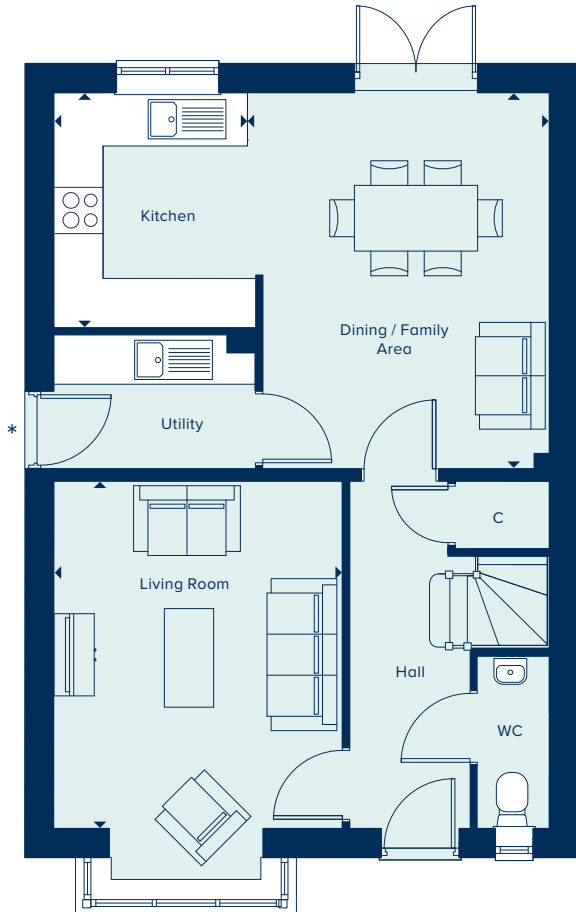


**CREST
NICHOLSON**

THE ROMSEY

4 Bedroom Home

crestnicholson.com



GROUND FLOOR

KITCHEN

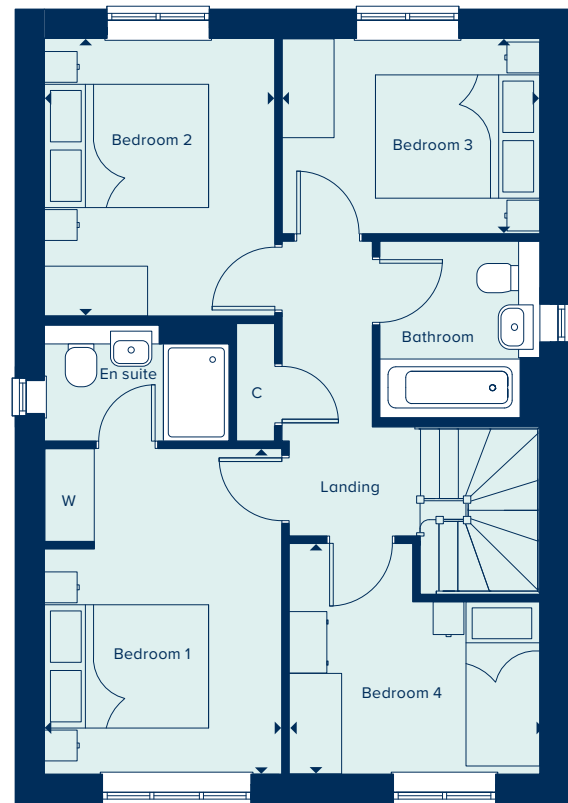
2.86m x 2.44m 9'4" x 8'0"

DINING / FAMILY AREA

4.58m x 3.59m 15'0" x 11'9"

LIVING ROOM

4.23m x 3.51m 13'10" x 11'6"



FIRST FLOOR

BEDROOM 1

3.97m x 2.90m 13'0" x 9'6"

BEDROOM 2

3.38m x 2.80m 11'1" x 9'2"

BEDROOM 3

3.14m x 2.38m 10'3" x 7'8"

BEDROOM 4

3.05m x 2.80m 10'0" x 9'2"

C Cupboard W Wardrobe ● Specification * Windows and doors are plot specific, speak to the Sales Executive for more detail

Please note, the digital illustrations are for illustration purposes only and any may not accurately depict elevation materials, gradients, landscaping or street furniture and may be subject to change. Whilst every effort has been made to ensure that the measurements and dimensions referred to in this brochure are an accurate reflection of the dimensions and measurements of the plots when built, the dimensions may vary from the measurements shown in the brochure save that any such variation shall be no greater than +/- 50mm of the measurements referred to in the brochure. You are strongly advised, therefore, not to order any carpets, appliances or any other goods which depend on precise dimensions before carrying out an actual measurement within your reserved plot. Whilst every reasonable effort has been made to ensure that the information contained in this brochure is correct, it is designed specifically as a guide only and does not constitute or form any part of a contract of sale transfer or lease unless any point that you specifically want to rely on is confirmed in writing by Crest Nicholson and is referred to in the contract. Please ask a sales executive for further details. Crest Nicholson is a registered developer with the New Homes Quality Code. Please speak to a sales executive if you need further help with any marketing material including provision in another format. 1010553/March 2023.





CREST
NICHOLSON

THE YORK

The York is a stunning four bedroom home. The Ground floor, with large kitchen/dining/family room is great for entertaining, whilst the separate living room is an ideal space to relax at the end of the day. Upstairs, the double main bedroom features an en suite and the 3 further well proportioned bedrooms are great for a growing family or visiting friends and family.

4 BEDROOM HOME

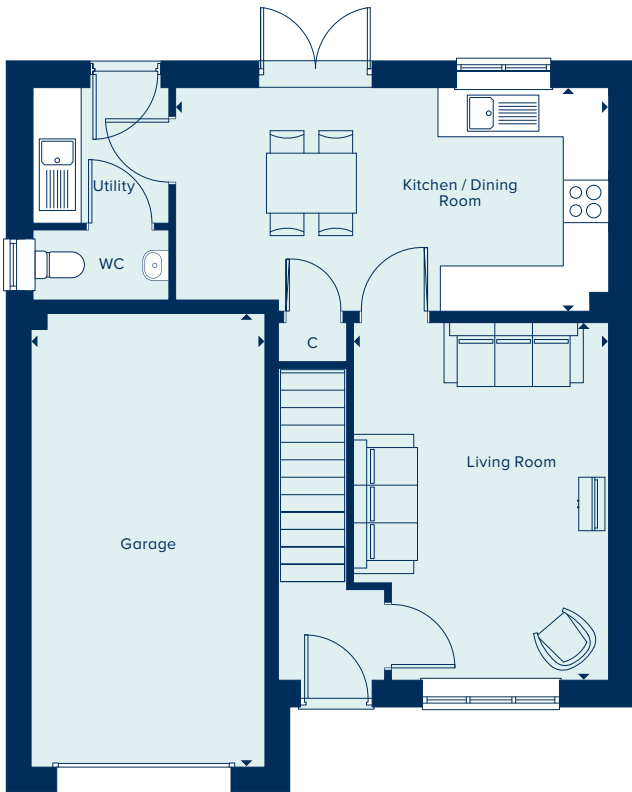




**CREST
NICHOLSON**

THE YORK
4 Bedroom Home

crestnicholson.com



GROUND FLOOR

KITCHEN / DINING ROOM

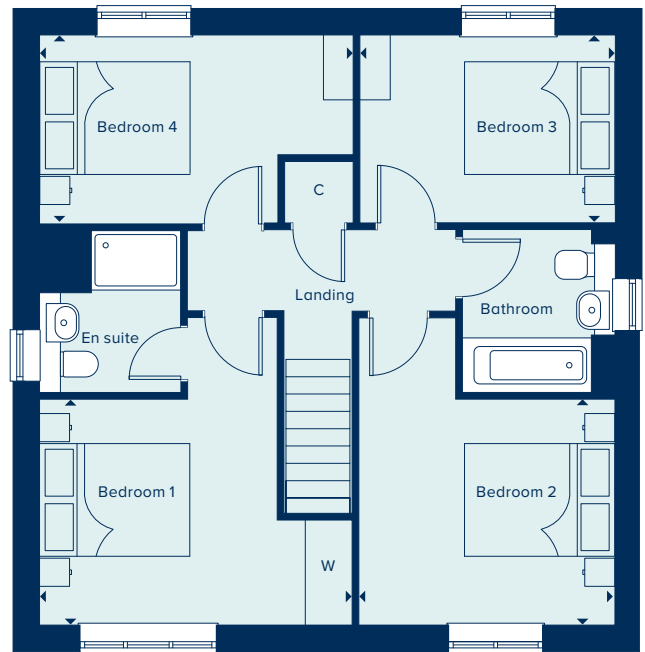
5.72m x 2.95m 18'9" x 9'8"

LIVING ROOM

4.73m x 3.37m 15'6" x 11'0"

GARAGE

5.99m x 3.09m 19'7" x 10'1"



FIRST FLOOR

BEDROOM 1

4.15m x 3.00m 13'7" x 9'10"

BEDROOM 2

3.37m x 3.00m 11'0" x 9'10"

BEDROOM 3

3.37m x 2.50m 11'0" x 8'2"

BEDROOM 4

4.15m x 2.50m 13'7" x 8'2"

C Cupboard W Wardrobe ● Denotes 4 bedroom specification for The York

Please note, the digital illustrations are for illustration purposes only and any may not accurately depict elevation materials, gradients, landscaping or street furniture and may be subject to change. Whilst every effort has been made to ensure that the measurements and dimensions referred to in this brochure are an accurate reflection of the dimensions and measurements of the plots when built, the dimensions may vary from the measurements shown in the brochure save that any such variation shall be no greater than +/- 50mm of the measurements referred to in the brochure. You are strongly advised, therefore, not to order any carpets, appliances or any other goods which depend on precise dimensions before carrying out an actual measurement within your reserved plot. Whilst every reasonable effort has been made to ensure that the information contained in this brochure is correct, it is designed specifically as a guide only and does not constitute or form any part of a contract of sale transfer or lease unless any point that you specifically want to rely on is confirmed in writing by Crest Nicholson and is referred to in the contract. Please ask a sales executive for further details. Crest Nicholson is a registered developer with the New Homes Quality Code. Please speak to a sales executive if you need further help with any marketing material including provision in another format. 1010553/March 2023.





CREST
NICHOLSON

THE MARLBOROUGH

The Marlborough is ideally suited to modern family living, featuring ample flexible spaces. The elegant hallway provides access to the central living areas: an open-plan kitchen-dining area with utility room and a spacious, light-filled living room. Upstairs are four large bedrooms, with the main bedroom benefiting from an en suite bathroom.

4 BEDROOM HOME





**CREST
NICHOLSON**

THE MARLBOROUGH

4 Bedroom Home

crestnicholson.com

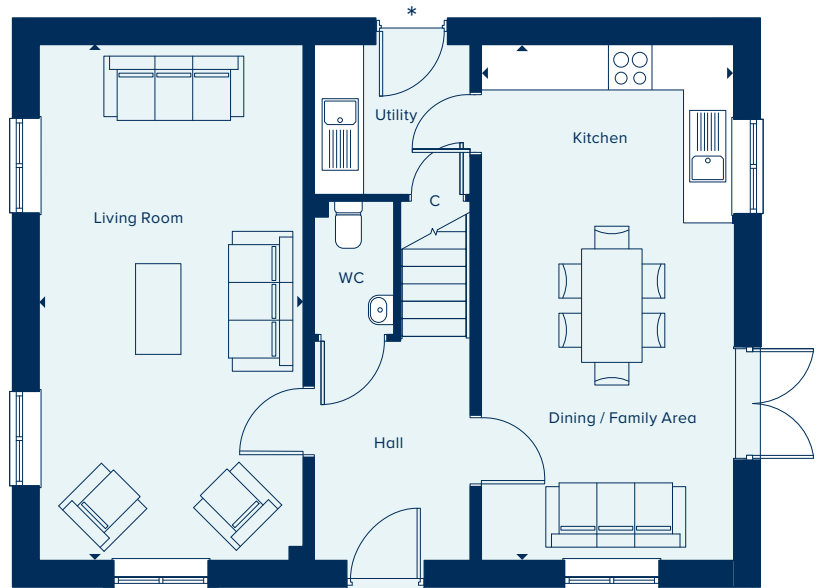
GROUND FLOOR

KITCHEN / DINING / FAMILY AREA

6.82m x 3.34m 22'4" x 10'11"

LIVING ROOM

6.82m x 3.49m 22'4" x 11'5"



FIRST FLOOR

BEDROOM 1

3.63m x 3.06m 11'9" x 10'0"

BEDROOM 2

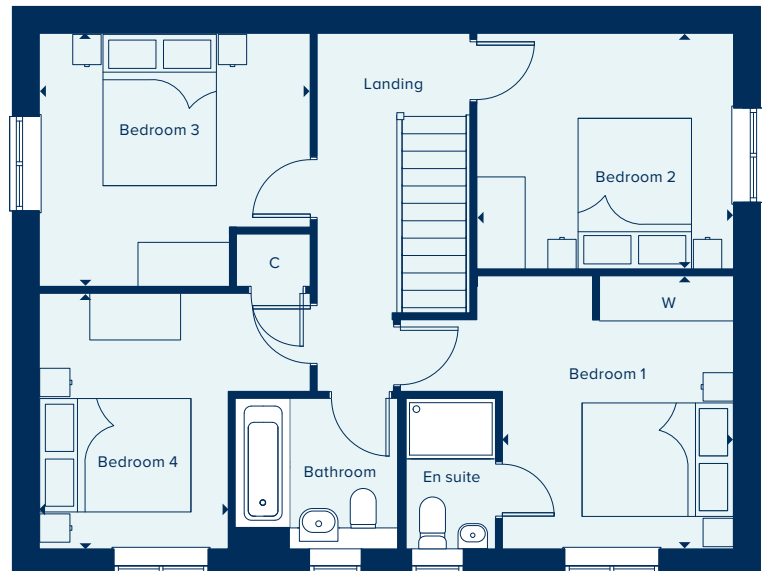
3.40m x 3.01m 11'2" x 9'9"

BEDROOM 3

3.59m x 3.35m 11'8" x 11'0"

BEDROOM 4

3.38m x 2.50m 11'1" x 8'2"



C Cupboard W Wardrobe ● Specification * Windows and doors are plot specific, speak to the Sales Executive for more detail

Please note, the digital illustrations are for illustration purposes only and any may not accurately depict elevation materials, gradients, landscaping or street furniture and may be subject to change. Whilst every effort has been made to ensure that the measurements and dimensions referred to in this brochure are an accurate reflection of the dimensions and measurements of the plots when built, the dimensions may vary from the measurements shown in the brochure save that any such variation shall be no greater than +/- 50mm of the measurements referred to in the brochure. You are strongly advised, therefore, not to order any carpets, appliances or any other goods which depend on precise dimensions before carrying out an actual measurement within your reserved plot. Whilst every reasonable effort has been made to ensure that the information contained in this brochure is correct, it is designed specifically as a guide only and does not constitute or form any part of a contract of sale transfer or lease unless any point that you specifically want to rely on is confirmed in writing by Crest Nicholson and is referred to in the contract. Please ask a sales executive for further details. Crest Nicholson is a registered developer with the New Homes Quality Code. Please speak to a sales executive if you need further help with any marketing material including provision in another format. 1010553/March 2023.





**CREST
NICHOLSON**

THE WINKFIELD

Arranged over two storeys, The Winkfield is an enviable family home. Its ample space perfectly accommodates entertaining, family life and homeworking. The downstairs features a flexible open-plan kitchen-dining area, in addition to a generously sized living room and a separate home office. Upstairs, each of the four bedrooms are well proportioned with the large main bedroom featuring an en suite bathroom.

4 BEDROOM HOME





**CREST
NICHOLSON**

THE WINKFIELD

4 Bedroom Home

crestnicholson.com

GROUND FLOOR

KITCHEN / DINING / FAMILY AREA

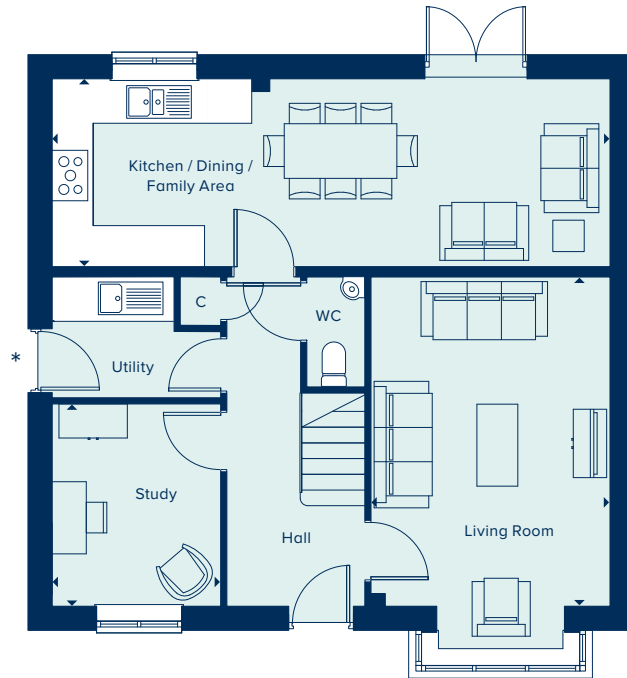
8.16m x 2.75m 26'7" x 9'0"

LIVING ROOM

4.82m x 3.50m 15'10" x 11'6"

STUDY

2.96m x 2.47m 9'8" x 8'1"



FIRST FLOOR

BEDROOM 1

4.28m x 3.49m 14'0" x 11'5"

BEDROOM 2

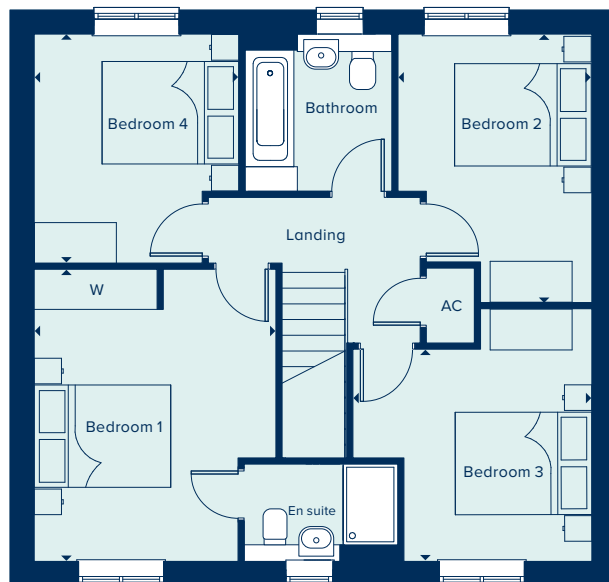
3.93m x 2.84m 12'11" x 9'4"

BEDROOM 3

3.50m x 3.11m 11'6" x 10'2"

BEDROOM 4

3.35m x 3.00m 11'0" x 9'10"



AC Airing Cupboard C Cupboard W Wardrobe ● Specification * Windows and doors are plot specific, speak to the Sales Executive for more detail

Please note, the digital illustrations are for illustration purposes only and any may not accurately depict elevation materials, gradients, landscaping or street furniture and may be subject to change. Whilst every effort has been made to ensure that the measurements and dimensions referred to in this brochure are an accurate reflection of the dimensions and measurements of the plots when built, the dimensions may vary from the measurements shown in the brochure save that any such variation shall be no greater than +/- 50mm of the measurements referred to in the brochure. You are strongly advised, therefore, not to order any carpets, appliances or any other goods which depend on precise dimensions before carrying out an actual measurement within your reserved plot. Whilst every reasonable effort has been made to ensure that the information contained in this brochure is correct, it is designed specifically as a guide only and does not constitute or form any part of a contract of sale transfer or lease unless any point that you specifically want to rely on is confirmed in writing by Crest Nicholson and is referred to in the contract. Please ask a sales executive for further details. Crest Nicholson is a registered developer with the New Homes Quality Code. Please speak to a sales executive if you need further help with any marketing material including provision in another format. 1010553/March 2023.





CREST
NICHOLSON

THE BUCKINGHAM

The Buckingham is a spacious five bedroom family home ideally suited to a large family or those who enjoy entertaining. An extensive kitchen, dining and family area extends across the rear of the property, with French doors opening onto the garden, the ground floor also benefits from a separate living room, study and utility room. Upstairs, the main bedroom suite enjoys an en suite and the four further bedrooms share the modern family bathroom.

5 BEDROOM HOME





**CREST
NICHOLSON**

THE BUCKINGHAM

5 Bedroom Home

crestnicholson.com

GROUND FLOOR

KITCHEN / DINING / FAMILY AREA

8.51m x 3.20m 27'10" x 10'6"

LIVING ROOM

4.94m x 3.56m 16'2" x 11'8"

STUDY

3.25m x 2.60m 10'8" x 8'6"



FIRST FLOOR

BEDROOM 1

3.77m x 2.67m 12'5" x 8'9"

BEDROOM 2

3.96m x 2.60m 13'0" x 8'6"

BEDROOM 3

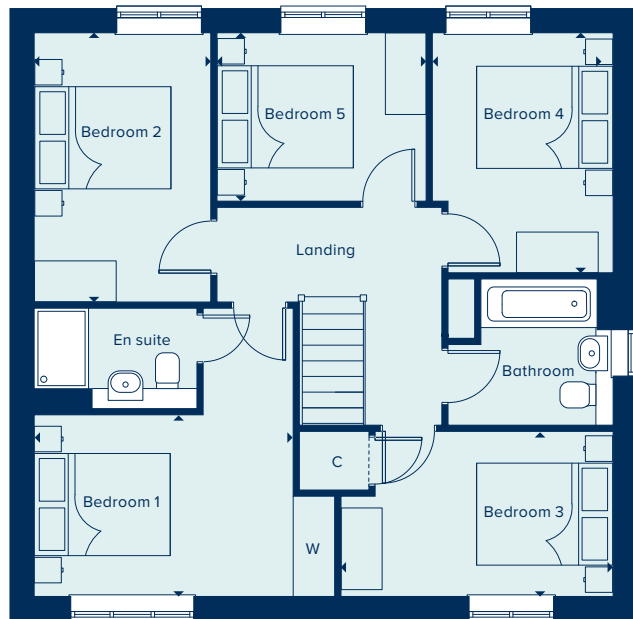
4.00m x 2.43m 13'1" x 8'0"

BEDROOM 4

3.53m x 2.66m 11'6" x 8'7"

BEDROOM 5

3.07m x 2.48m 10'1" x 8'1"



C Cupboard W Wardrobe --- Bulkhead * Windows and doors are plot specific, speak to the Sales Executive for more detail

Please note, the digital illustrations are for illustration purposes only and any may not accurately depict elevation materials, gradients, landscaping or street furniture and may be subject to change. Whilst every effort has been made to ensure that the measurements and dimensions referred to in this brochure are an accurate reflection of the dimensions and measurements of the plots when built, the dimensions may vary from the measurements shown in the brochure save that any such variation shall be no greater than +/- 50mm of the measurements referred to in the brochure. You are strongly advised, therefore, not to order any carpets, appliances or any other goods which depend on precise dimensions before carrying out an actual measurement within your reserved plot. Whilst every reasonable effort has been made to ensure that the information contained in this brochure is correct, it is designed specifically as a guide only and does not constitute or form any part of a contract of sale transfer or lease unless any point that you specifically want to rely on is confirmed in writing by Crest Nicholson and is referred to in the contract. Please ask a sales executive for further details. Crest Nicholson is a registered developer with the New Homes Quality Code. Please speak to a sales executive if you need further help with any marketing material including provision in another format. 1010553/March 2023.





SPECIFICATION

Your brand new Crest Nicholson home benefits from attractive styling and modern integrated appliances.

	2 & 3 Bedroom Home	4 Bedroom Home	4 Bedroom Home	5 Bedroom Home
		●	●	
KITCHEN				
Choice of soft close fitted kitchen complete with laminate worksurface and upstand (subject to stage of construction)	●	●	●	●
Electric single built-in oven in stainless steel	●			
Electric built-under 1 ½ oven in stainless steel		●		
Electric built-in double oven in stainless steel			●	●
4 ring gas hob in stainless steel	●	●		
5 ring gas hob in stainless steel			●	●
Stainless steel splashback behind hob	●	●	●	●
Stainless steel chimney extractor hood	●	●	●	●
Energy efficient integrated fridge/freezer	●	●	●	●
Energy efficient integrated dishwasher		●*	●	●
Energy efficient integrated washing machine	●	●**	●**	
Single bowl sink and drainer in stainless steel	●	●		
1.5 bowl sink and drainer in stainless steel			●	●
Single lever chrome mixer tap	●	●	●	●
BATHROOM, EN SUITE AND CLOAKROOM				
Contemporary white sanitaryware	●	●	●	●
Chrome mixer taps and shower fittings	●	●	●	●
Full height tiling around bath with shower and folding bath screen where there is no separate shower facility in the home	●			
Half height tiling around bath where a separate shower facility is provided in the home	●	●	●	●
Full height tiling to enclosed shower area where applicable	●	●	●	●
Half height tiling to walls where other sanitaryware is fitted in bathroom and en suite	●	●	●	●
Heated white towel rail to bathrooms and en suites	●	●	●	●
Tiled splashback to basin in cloakroom	●	●	●	●

● Homes under 1350 sq ft ● Homes over 1350 sq ft

*Integrated dishwasher included to the Filey or if there is a utility room **Integrated washing machine included if there is no utility room.



	2 & 3 Bedroom Home	4 Bedroom Home	4 Bedroom Home	5 Bedroom Home
ELECTRICAL		●	●	
Low energy LED downlighters in white to kitchen	●	●	●	●
Low energy LED downlighters in white to bathroom and en suite	●	●	●	●
Low energy lighting in all other areas	●	●	●	●
TV and data point to living room & TV point to main bedroom	●	●	●	●
Telecommunications to the home including fibre for broadband capabilities	●	●	●	●
DECORATION				
White emulsion to all rooms and ceilings	●	●	●	●
White gloss to window boards, internal doors, skirting and architraves	●	●	●	●
JOINERY AND DOORS				
Front door with multipoint locking system and chrome ironmongery	●	●	●	●
White PVCu windows and patio doors with white ironmongery	●	●	●	●
White internal doors with chrome ironmongery	●	●	●	●
Fitted wardrobes to main bedroom with soft close sliding mirror fronted doors	●	●	●	●
HEATING				
Gas-fired boiler with wet radiator heating system and domestic hot water provided at mains pressure	●	●	●	●
EXTERNAL FINISHES				
Front gardens to be landscaped	●	●	●	●
Rear gardens topsoiled and rotovated	●	●	●	●
External low energy security light fitted by front door	●	●	●	●
External tap	●	●	●	●
SECURITY AND PEACE OF MIND				
Smoke, heat and carbon monoxide detectors	●	●	●	●
Two years warranty and aftercare	●	●	●	●
Complete NHBC or Premier Guarantee ten year warranty	●	●	●	●

Crest Nicholson follows NHBC and Premier guidelines on number of plug sockets to install in homes, which require a minimum of: eight sockets in any kitchen (including appliances spurs); four double sockets in any living room; three double sockets in any study, two double sockets in any dining room, one double socket in any hallway and one double socket on any landing; three double sockets in any double bedroom; two double sockets in any single bedroom; one double socket in any dressing room and two double sockets in any other rooms.

Whilst every effort has been made to ensure that the contents and specification in this brochure is correct and accurate at the time of creation, it may be subject to change and Crest Nicholson reserves the right to amend the contents and specification at any time prior to completion. This contents and specification does not in any way constitute or form any part of a contract of sale transfer or lease. Please ask a sales executive for further details. Crest Nicholson is a registered developer with the New Homes Quality Code. Please speak to a sales executive if you need further help with any marketing material including provision in another format.

